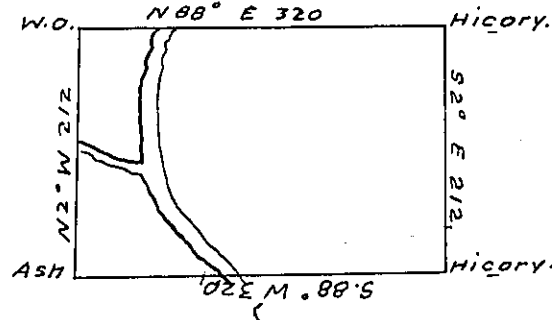


Richard Whitehead

John White



Samuel Wetherell, Junr

Israel Wheelin.

The above is a draught of a Survey made 7th of June 1796 in pursuance of a Warrant granted John Wharton on the 14th Aprile 1792 Situated on the waters of Big Beaver Creek in Alleghany County Containing four hundred Acres and allowance of Six per Centum Called "Humphys."

Thomas Stokely, D.S.

Daniel Brodhead, Esq^r.

Surveyor General of Penn^a.

IN TESTIMONY that the above is a copy of the original remaining on file in the Department of Internal Affairs of Pennsylvania, made conformably to an Act of Assembly approved the 16th day of February, 1833, I have hereunto set my Hand and caused the Seal of said Department to be affixed at Harrisburg, this tenth day of October, 1906

Leach R. Perry
Secretary of Internal Affairs.